

Dec. 4, 2025



# Arlington County Water Pollution Control Plant

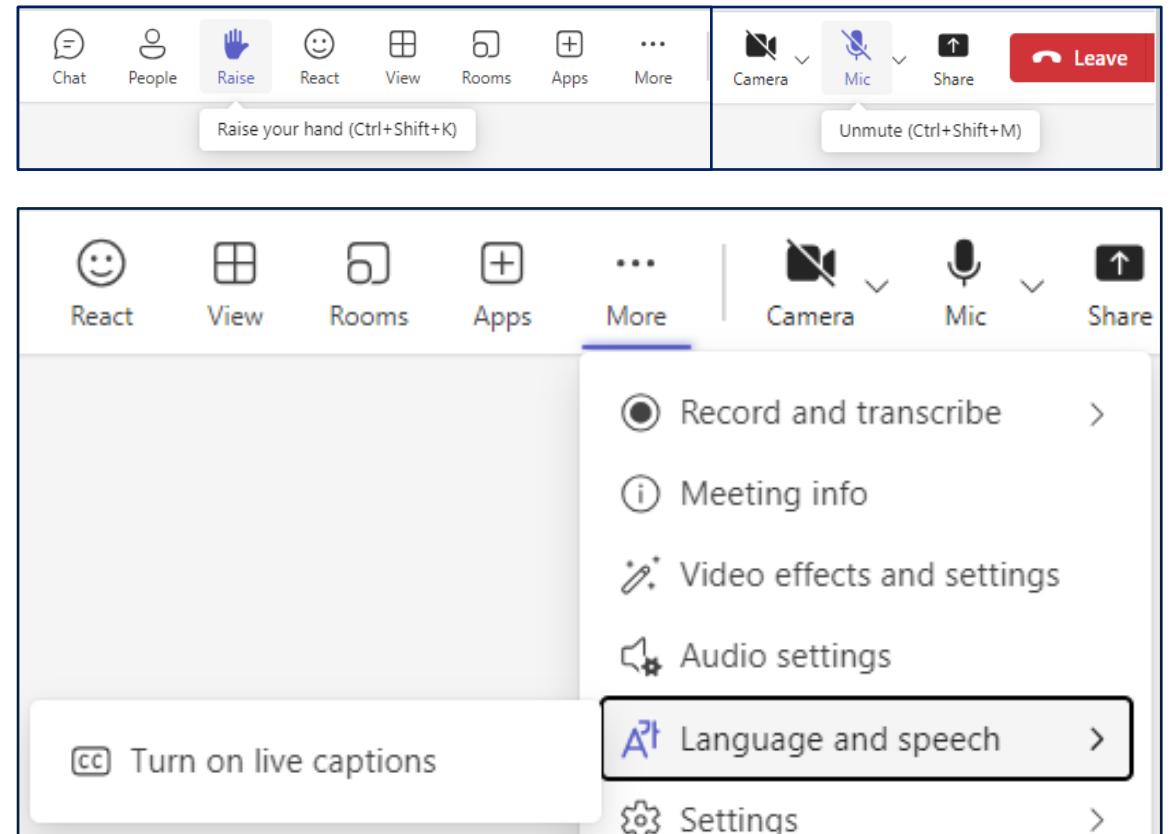
December 2025

Biosolids Advisory Panel

# Meeting Logistics

## MS Teams Controls

- Everyone will be muted during the presentation
- Questions can be entered in the chat or by raise hands before unmuting
- To turn on live language translation captions, click 'More' and then 'Language and speech' in the dropdown menu



# Agenda

---

1. Introductions
2. General Updates
3. Open House Recap
4. Odor Control Testing
5. Early Work Package
6. What to Expect During Construction
7. Updated Renderings
8. CIP Update
9. Open Discussion



# 01

## Introductions

# Introductions

**Antron  
Sutton**

Arlington County Water  
Pollution Control Bureau

**Mary  
Strawn**

Arlington County Water  
Pollution Control Bureau

**Lisa  
Racey**

Arlington County Water  
Pollution Control Bureau

**Fasil  
Haile**

Arlington County Water  
Pollution Control Bureau

**Brian  
Balchunas**

HDR

**Emily  
Tuttle**

HDR

**Tucker  
Cotter**

HDR

**Dan  
Stromberg**

PC Construction

**Laura  
Simmers**

PC Construction





# 02

## General Updates

# Project Components

Gravity Thickeners	Early Work Package	Main Work Package	Program Management
Rehabilitate existing gravity thickeners	Demolition, Utility relocation, Site preparation	New processes and facilities	Assistance with program development and oversight

# Near-term Project Schedule

Project Phase	Sep-25	Oct-25	Nov-25	Dec-25	Jan-26	Feb-26	Mar-26	Apr-26	May-26	Jun-26	Jul-26	Aug-26	Sep-26	Oct-26	Nov-26	Dec-26	Jan-27	Feb-27	Mar-27
Gravity Thickeners																			
Design																			
Bidding and Award																			
Construction																			
Design Build																			
Early Work Construction																			
Main Project Design																			
GMP Negotiations																			
Main Project Construction																			



# Early Work Package Updates



## Completed

- Construction planning activities
- Work packages and final price development
- Final design documents
- Permitting



## Upcoming

- Construction

# Main Work Package Updates

## Completed



- Submitted intermediate (65%) design documents
- Coordinated start-up and commissioning approach and performance requirements
- Coordinated activities for maintaining plant operation

## Upcoming



- Review intermediate design documents
- Begin preparation of work packages and pricing

# Envision and Sustainability Updates



## Completed

- Implementation of Envision plan for Early Work Package
- Began write-up of credits for entire project



## Upcoming

- Registering project for Envision verification
- Finalize structure for collecting documents
- Begin document collection for Early Work



# 03

---

## Open House Recap



# Community Open House

- Saturday, Oct. 18, 10 AM – 2 PM
- Attendance included around **100** neighbors and **5** partner booths/displays
- Guests:
  - Visited booths to learn about wastewater treatment, the Re-Gen program and biosolids
  - Attended mini-tours of the plant
  - Planted houseplants using Class A biosolids
  - Touched heavy equipment and played games at the Kids' Zone
  - Learned what to expect during EWP construction

**OPEN HOUSE!**

Water Pollution Control Plant

**RAIN OR SHINE!**

**Saturday, October 18, 2025**  
**10 AM – 2 PM**

Arlington Water Pollution Control Plant  
3402 S. Glebe Road, Arlington, VA  
*Parking is available nearby*

**KIDS GAMES! PLANT TOURS! ASK AN EXPERT!**

Drop by our family-friendly open house to learn about Arlington Re-Gen, a major improvement project at the Water Pollution Control Plant. Construction begins this fall!

To learn more about the facility upgrades visit: [arlingtonregen.com](http://arlingtonregen.com)

**DID YOU KNOW?**

This project will replace aging plant equipment with **state-of-the-art technology**. The upgrades will allow Arlington County to recover two key resources from wastewater:

**Class A Biosolids**  
A nutrient-rich soil amendment that can be used for agriculture, gardens, forests, and landscaping.

**Biogas**  
An energy source that can be used as renewable natural gas in place of fossil fuel-based natural gas or as a renewable vehicle fuel.

regen@arlingtonva.us | arlingtoncountyva | ArlingtonDES | @arlingtoncountyTV | ARLINGTON VIRGINIA











# Open House Feedback

## Positive Feedback

Appreciation for the opportunity and proactive communication

Kids too young for full plant tours attended and participated

## Areas of Concern

Potential noise and odors before, during, and after construction

Questions about contaminants like PFAS and microplastics





# 04

## Odor Control Testing

# Upcoming Odor Control Testing

- **Odor concerns continue to be raised** by residents adjoining the WPCP
- HDR has developed a draft scope of work to **assess extent and types of onsite odors**, and monitoring at locations along the Plant fenceline
- This work will help inform where major sources of odors are coming from and determine next steps





# 05

## Early Work Package

# EWP Construction Begins in December

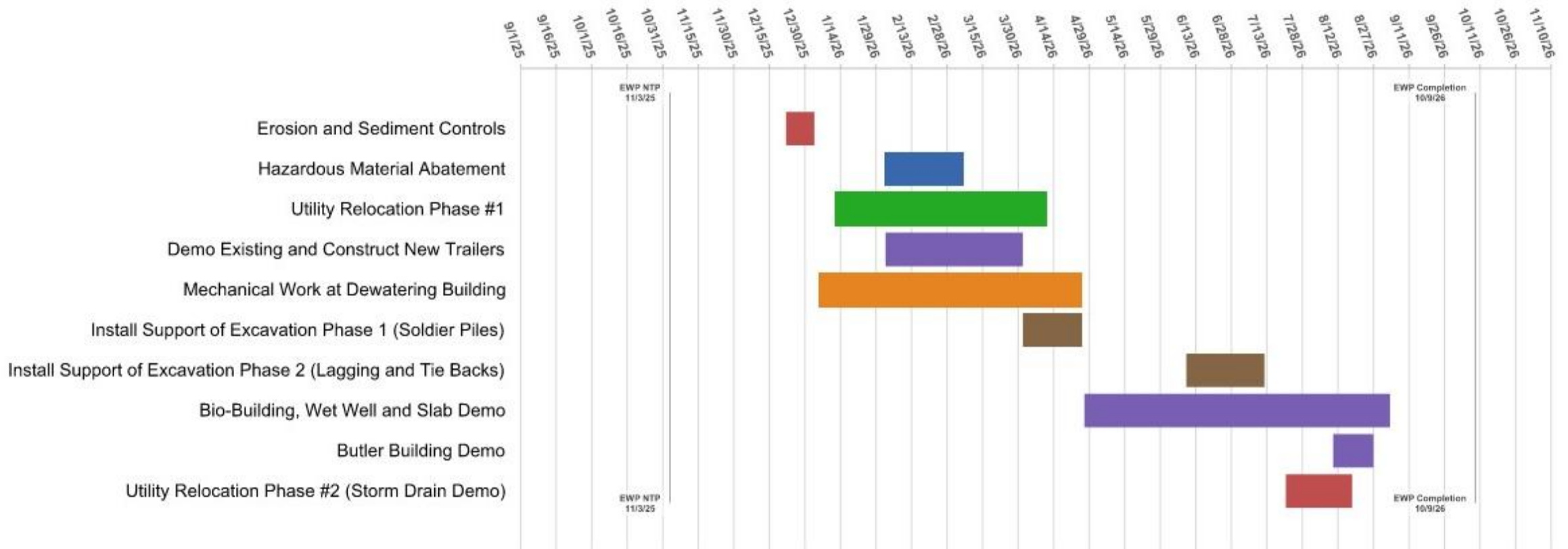
**The Early Work Package will focus on site clearing and utility work, including:**

- Site preparation and grading for future process buildings and support structures
- Relocation of utilities (water, sewer, power, communications) for new facilities
- Relocation of select process piping to keep current operations online throughout construction
- Demolition of buildings and structures to create space for new facilities
- Construction of staging areas to safely move materials and equipment around the site
- Foundation work for future buildings and treatment systems





# Early Work Package Schedule

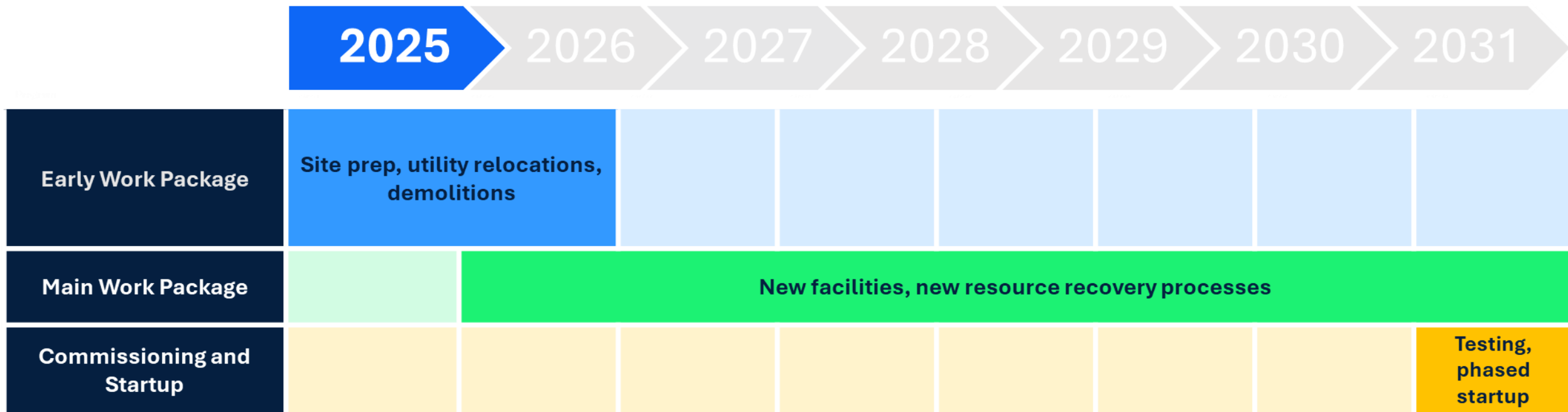




# 06

## What to Expect During Construction

# Construction Timeline



*\*All dates are subject to change*



# Construction Impacts

- All work will occur within the Plant footprint, and day-to-day Plant operations will continue uninterrupted
- Neighbors may notice daytime construction activity, equipment movement, and deliveries
- All work will be managed to minimize noise and traffic impacts
- Work will begin this month and activities will ramp up slowly





# Noise and Vibration Monitoring

- Six automated vibration monitors placed throughout the site
- Two automated noise monitors will be placed on opposite sides of the site
- PC will be notified if either noise or vibration near maximum limits



# Dust Control During Construction

- Vacuum-style **street sweeper** will be on-call
- Demolition subcontractor will provide a **water-based dust suppression system** during building demolition

# Traffic and Parking Impacts

## Traffic Impacts

- No street closures anticipated during the Early Work Package
- Limited traffic impact as trucks are leaving the site

## Parking

- Parking for construction staff will be in the lot on 31st Street
- No staff parking is permitted in the surrounding neighborhoods

# Contact During Construction

**Mary Strawn**

**703-228-6829**

**WPCP main phone number**

**703-228-6820**

**Shift Supervisor (24/7)**

**703-585-6851**



Pick up fridge magnets for your civic association members!



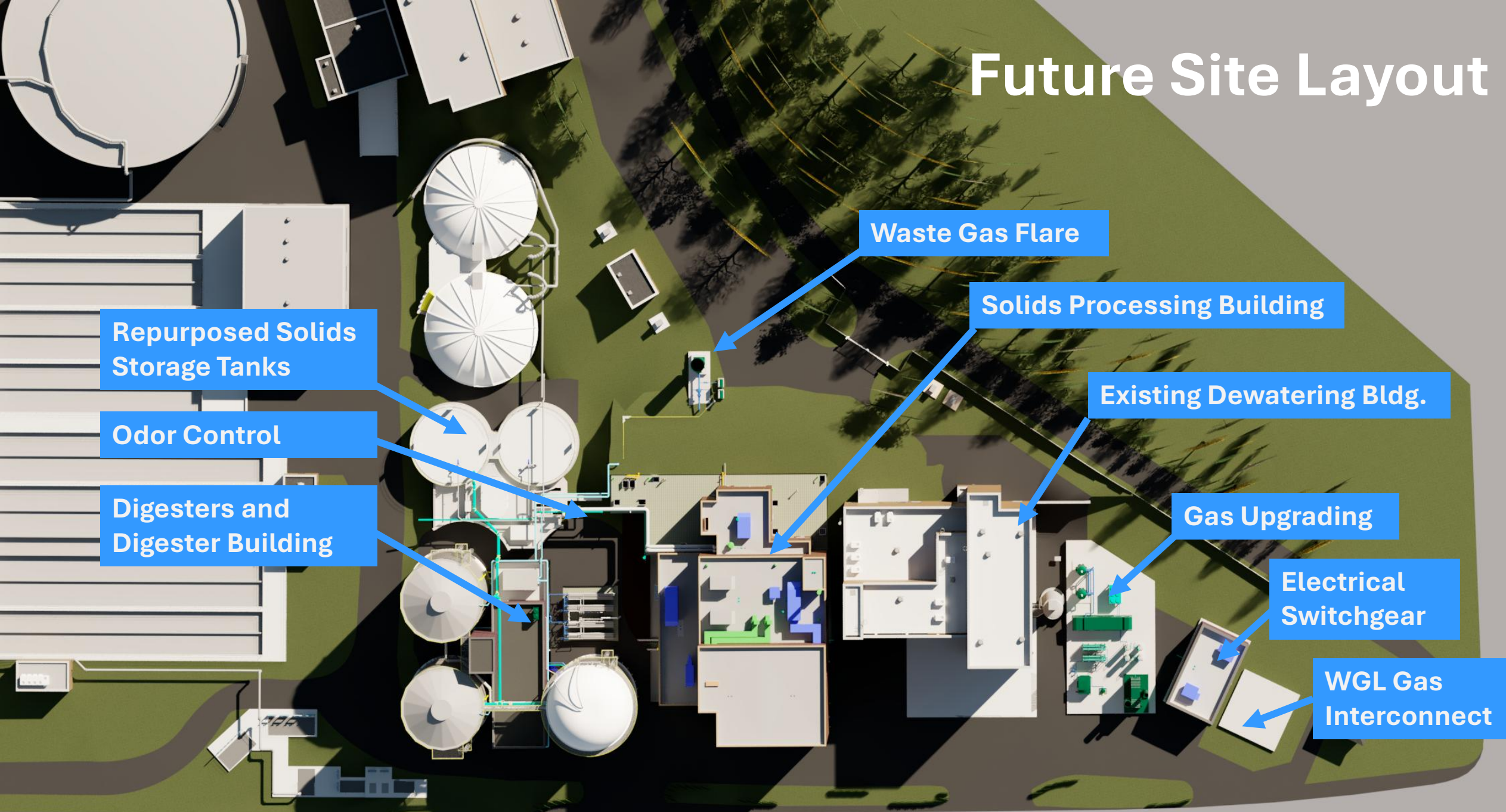


# 07

## Updated Renderings



# Future Site Layout





# View looking northwest from Eads St.





# View looking northwest from Eads St.





View looking southeast from 31<sup>st</sup> St.





# View looking southeast from 31<sup>st</sup> St.





# View from above



Image Landsat Copernicus





# 08

## CIP Update

# About the CIP

The **Capital Improvement Plan (CIP)** is Arlington County's 10-year plan for building, maintaining, upgrading or replacing County facilities and infrastructure. The CIP includes water, sewer, and stormwater infrastructure.

It is updated every two years, with any adopted general obligation bond referenda presented to voters in November of even numbered years.

## Where are we now?

Arlington County is currently developing the **FY 2027 – FY 2036 CIP**.

The next step is the County Manager's Budget Outlook announcement, which will be followed by public engagement. Work sessions and public hearings will take place in the coming months, followed by adoption by the County Board at the June or July meeting.

We are currently evaluating the impacts of inflation, tariffs and other changes on the budget for the Re-Gen project.





# 09

---

## Open Discussion





# Thank You!

## Project Contact

Mary Strawn | Chief Engineer  
[regen@arlingtonva.us](mailto:regen@arlingtonva.us)

